

# Overview of Onboarding and Enablement for Ariba Network

## What is Supplier Enablement all about?

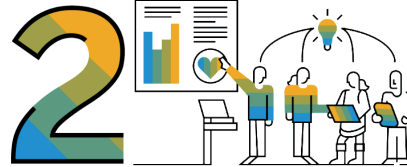
Supplier Enablement is all about establishing a simple and repeatable process to:

### Onboard suppliers to Ariba Network



- Suppliers will onboard via:
- Standard onboarding
  - Enterprise onboarding

### Onboard suppliers to Ariba Network



- Support includes:
- Supplier-managed contracts or catalogs
  - Supplier integrations
  - Mobile App
  - Mobile App
  - Portal Transaction Education

## Standard Onboarding vs Enterprise Onboarding

There are two potential methods to consider for onboarding suppliers:

- Standard onboarding – done at the point of transaction with the supplier
- Enterprise onboarding – must be done in advance and proactively managed

Onboarding will lead to the supplier either creating a new account or leveraging an existing account that will be linked to you as a buyer. There are many factors to consider when determining which method is most appropriate for your organization and for each supplier. Later in the explore phase, we'll dive into these details to determine a strategy and plan for the suppliers in scope.

[Standard Account Demo](#)

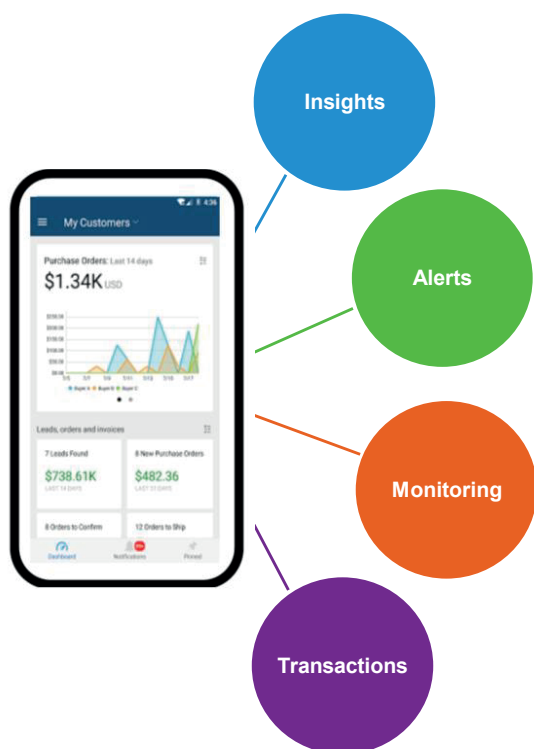
[Enterprise Account Demo](#)

## Supplier Account Types

	A STANDARD ACCOUNT	B ENTERPRISE ACCOUNT
		<p><b>PORTAL USAGE</b></p> <p><b>INTEGRATION</b></p>
<b>Process Impact</b>	<ul style="list-style-type: none"> <li>✓ Manual Process</li> <li>✓ Supplier Mobile App</li> </ul>	<ul style="list-style-type: none"> <li>✓ Manual Process</li> <li>✓ Supplier Mobile App</li> </ul>
<b>Orders and Invoices</b>	<ul style="list-style-type: none"> <li>✓ Respond to emailed orders using order confirmations, invoices, etc.</li> </ul>	<ul style="list-style-type: none"> <li>✓ Skip the emails and leverage a central inbox/outbox to receive and manage orders and invoices all on Ariba Network.</li> </ul>
<b>Transacting Methods</b>	<ul style="list-style-type: none"> <li>✓ PO Flip</li> <li>✓ Mobile App</li> </ul>	<ul style="list-style-type: none"> <li>✓ PO Flip</li> <li>✓ Mobile App</li> <li>✓ Catalog Enablement (CIF)</li> </ul>
<b>Legal Archive</b>		<ul style="list-style-type: none"> <li>✓ Long-term invoice archiving for global compliance</li> </ul>
<b>Reporting</b>		<ul style="list-style-type: none"> <li>✓ Get reports to track transactions and sales activities</li> </ul>
<b>Support</b>	<ul style="list-style-type: none"> <li>✓ Help Center</li> </ul>	<ul style="list-style-type: none"> <li>✓ Help Center, phone, chat, and webform</li> </ul>
<b>Cost</b>	Free	May be subject to Transaction/ Subscription Fees based on usage
<b>SELLING</b>		Transaction/ Subscription Fees starting at Silver Level based on usage + internal resources
<b>Ariba Discovery</b>	<ul style="list-style-type: none"> <li>✓ Join our business matchmaking service to get high quality sales leads. Fees may apply.</li> </ul>	
<b>Sourcing, Contract Management</b>	<ul style="list-style-type: none"> <li>✓ Get invited to RFx, Auctions and other events. No fees apply.</li> </ul>	

For more information and quick tutorials on Standard Accounts, click on this link. Choose your preferred language at the top of the page.

## Supplier Mobile App



### Business Insights

- PO trending
- Invoice aging
- PO and invoices by customer

### Real-Time Alerts

- View network activity
- Receive push alerts for business critical events

### Monitor Key Activity

- View PO and invoice information
- Search for PO and invoices using HANA

### Work on-the-go

- Confirm PO
- Pin important documents for later

More information on the [Mobile App!](#)

## ARIBA NETWORK CATALOGS

### What is an Ariba Catalog?

An organized, descriptive, aggregated list of goods and services available to potential buyers in a hierarchical structure with a unified interface. There are two types of supplier-managed catalogs:



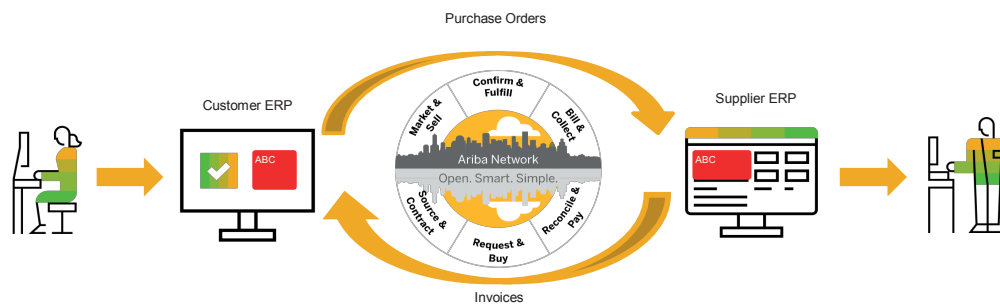
## ARIBA NETWORK INTEGRATION

### What is a supplier integration?

Connecting a supplier's ERP to the Ariba Network via an electronic method to transact via a touchless process (e.g. cXML, EDI, CSV, PIDX, etc).

### Why integrate?

Electronic communication is faster, more accurate, more repeatable, less expensive and improves both supplier and customer satisfaction.



© 2020 SAP SE or an SAP affiliate company. All rights reserved. | PUBLIC